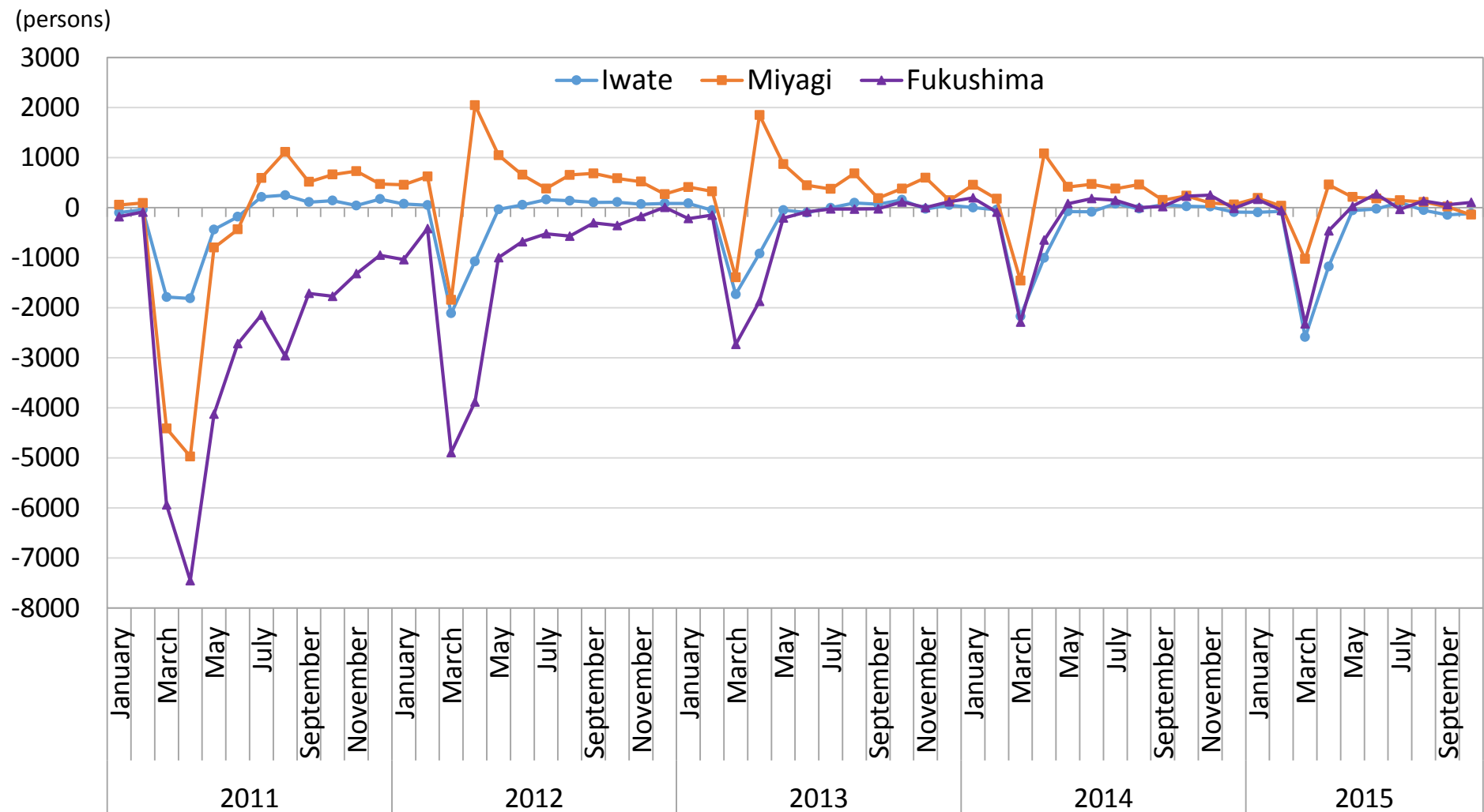


Changes of Net Loss of Net-migration in Iwate Pref., Miyagi Pref., Fukushima Pref. (From January, 2012 to October, 2015)



Source: This chart is provided by Ministry of Internal Affairs and Communication "Report on the demographic shift of the Basic Resident Register"

Detailed Information of the figure on the previous page

Title on the previous page		Changes of Net Loss of Net-migration in Iwate Pref., Miyagi Pref., Fukushima Pref. (From January, 2012 to October, 2015)
Point of displayed contents		There was a sizable surplus of out-migrants in three prefectures just after the disaster.
Details of the source	Name of the source	Ministry of Internal Affairs and Communication “ Report on demographic shift of the Basic Resident Register ” <Monthly> (in Japanese)
	Title	Table 1. Number of Intra-prefectural Migrants, In-migrants from Other Prefectures and Out-migrants' to Other Prefectures by Sex for Japan, Prefectures and 21 Major Cities(From January, 2012 to October, 2015)
	URL	http://www.e-stat.go.jp/SG1/estat/OtherList.do?bid=000001006005&cycode=1
Keywords		Surplus of out-migrants, Demographic shift, Demographic Movement